



CAMP COVENANT 2024

BPJ Centre Pre-Camp Brief



Kuala Lumpur



Welcome!!

- Please **mute** your microphone during the briefing.
- Do prepare another device as we will be using another application platform **Mentimeter** and **Pigeonhole** during the brief.
- Please **hold** your questions till the Q&A and we will be using the **Pigeonhole** platform.





Agenda for tonight

Introduction

Ice Breaker

Spiritual Preparation

Admin Brief

Q&A





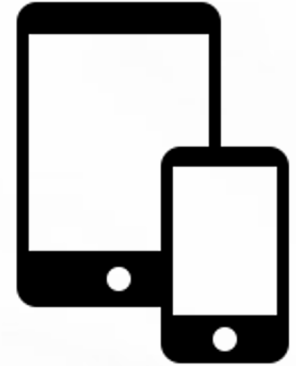
The Camp Committee

- ❖ Advisor Ps Edmund Wong
 - ❖ May Tan
- ❖ Christopher Goh
- ❖ Deborah Ng
- ❖ Vivian Tan
- ❖ Leong Ya Lai
- ❖ Gordon Foo
- ❖ Michael Chong
- ❖ Kevin Long



Ice Breaker

**You will need your phones
to participate in the ice breaker :)**





"PREPARING TO MEET KING JESUS"

*Authentic Discipleship
and Intentional
Disciplemaking of A
Certain Kind*





3 FAITH EXPLOITS

For Intentional Disciplemaking:

Disciple the *Generations*

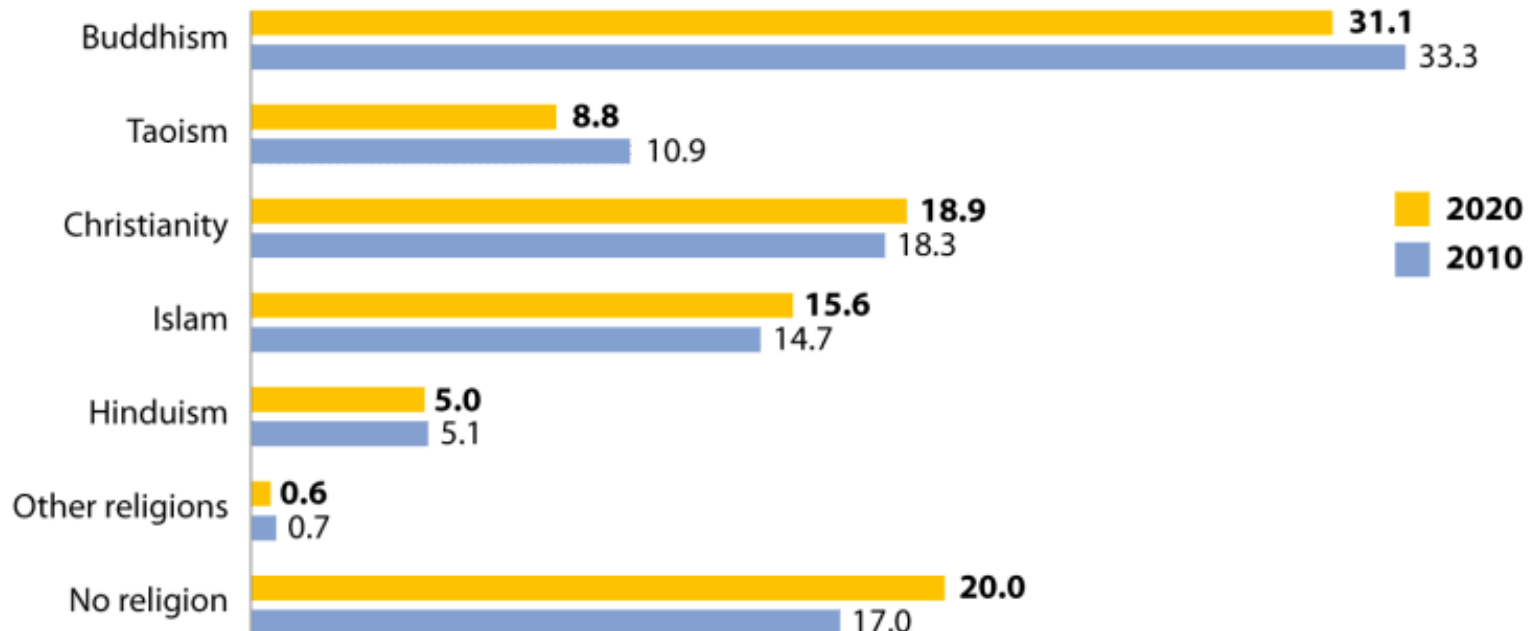
Disciple *Singapore*

Disciple the *Nations*



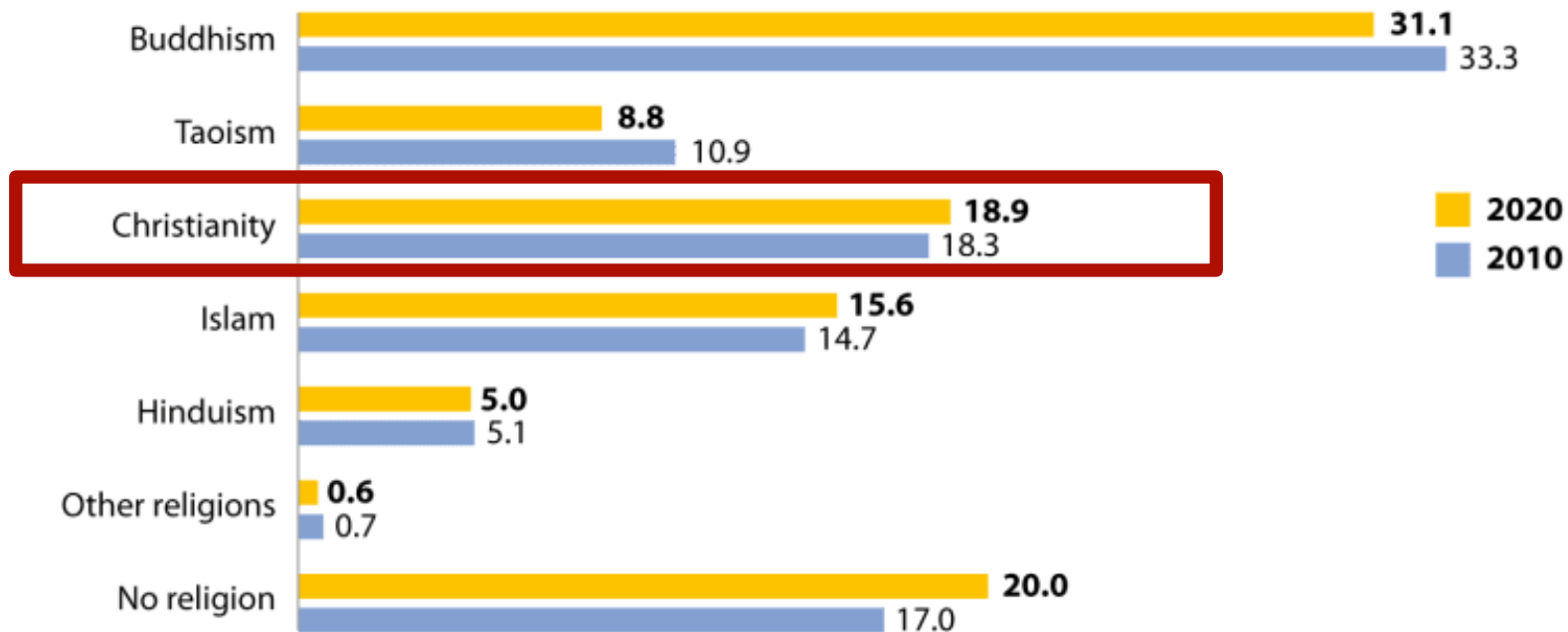
RELIGIONS AMONG RESIDENT POPULATION AGED 15 AND ABOVE

Per cent



RELIGIONS AMONG RESIDENT POPULATION AGED 15 AND ABOVE

Per cent



Religion	1980	1990	2000	2010	2015	2020
Christianity	9.9%	12.5%	14.6%	18.4%	18.8%	18.9%

STATE OF THE
CHURCH

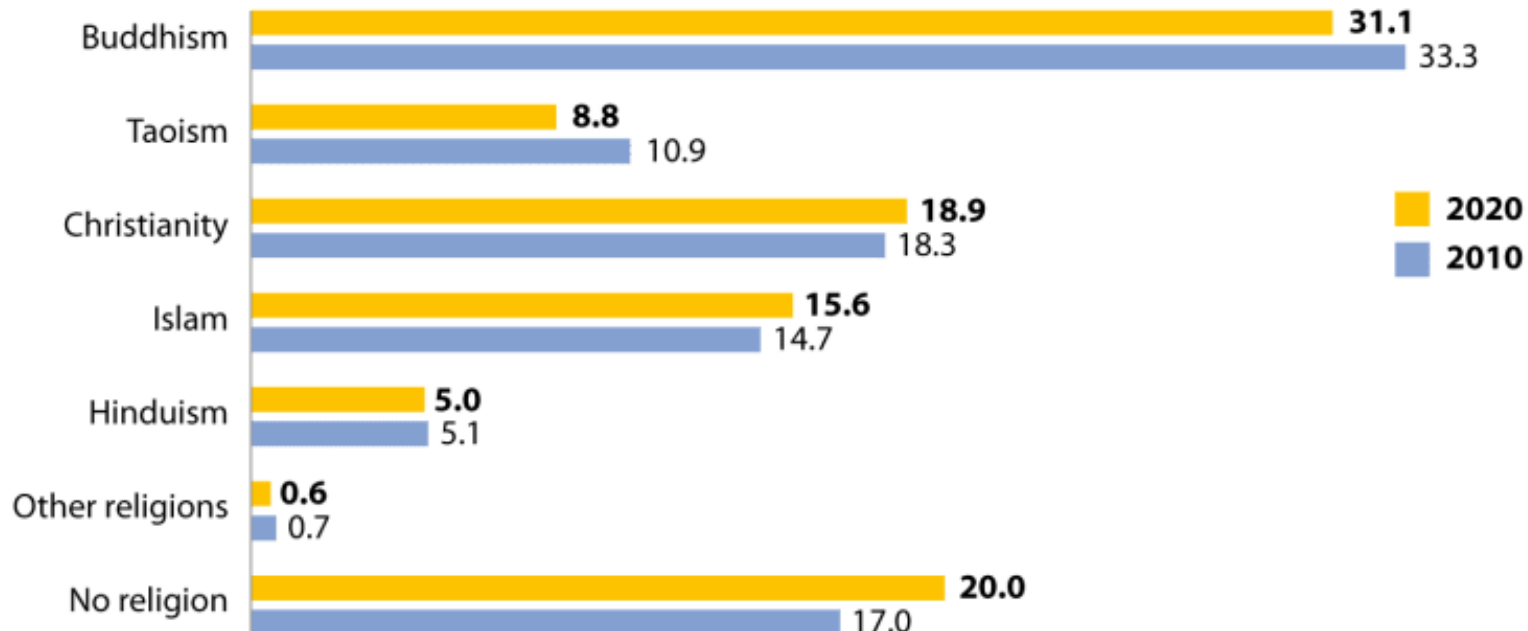


SINGAPORE 2023

*“The total population of Christians (including Catholics) may have increased from 18.8% in 2015 to 18.9% in 2020, but **narrow that down to just the Protestants and the census shows we have shrunk from 12.1% to 11.9% in that same time – the first fall since such data were captured at the national level.**”* Pastor Edric Sng

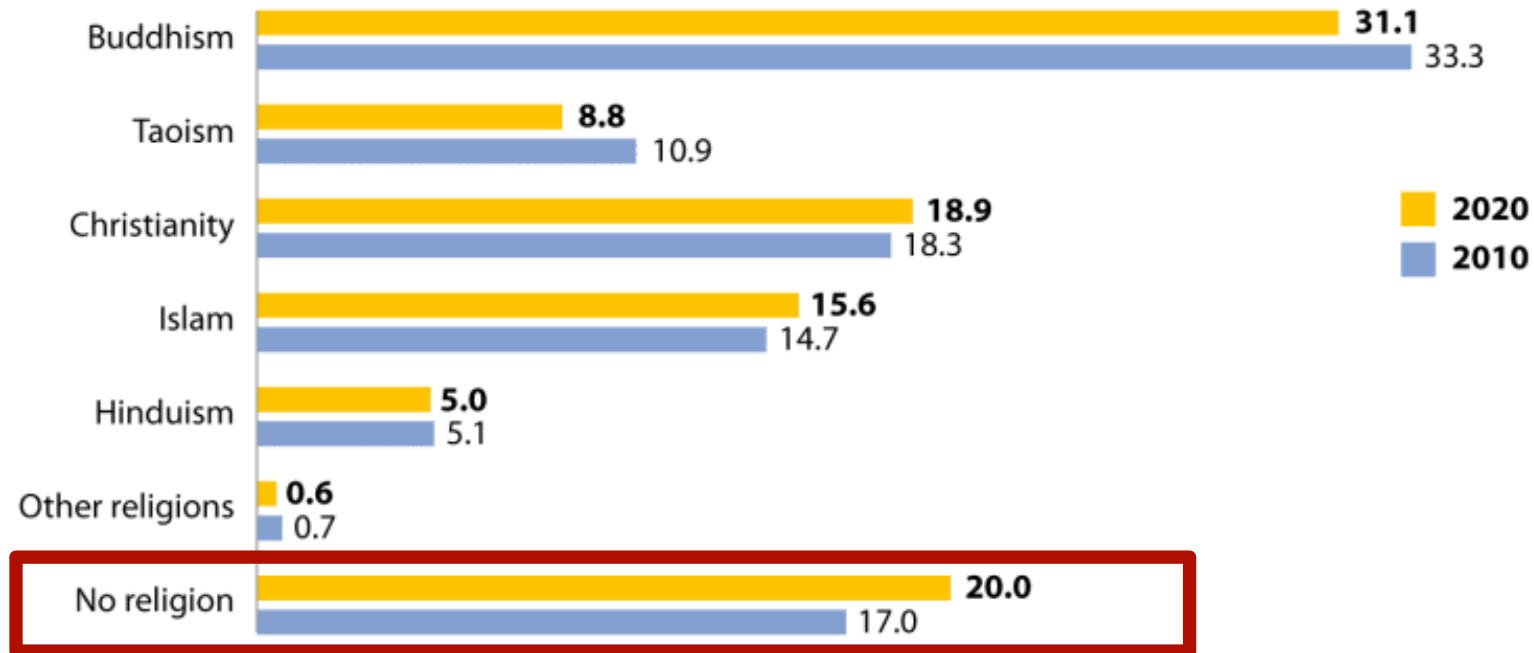
RELIGIONS AMONG RESIDENT POPULATION AGED 15 AND ABOVE

Per cent



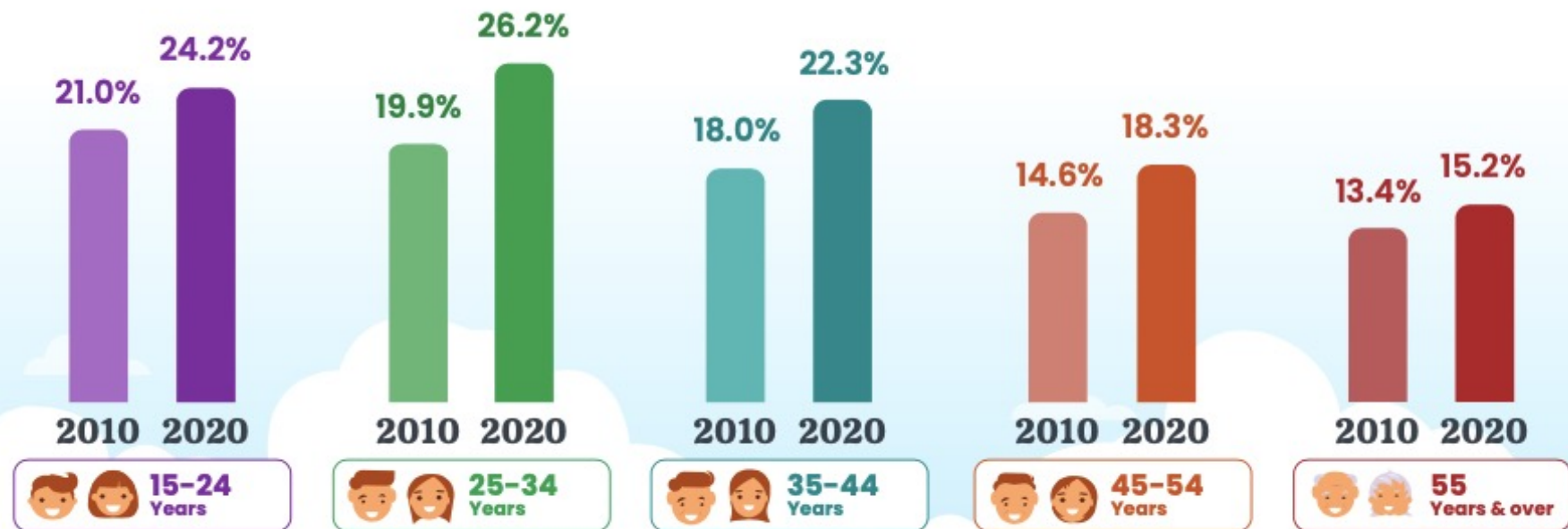
RELIGIONS AMONG RESIDENT POPULATION AGED 15 AND ABOVE

Per cent



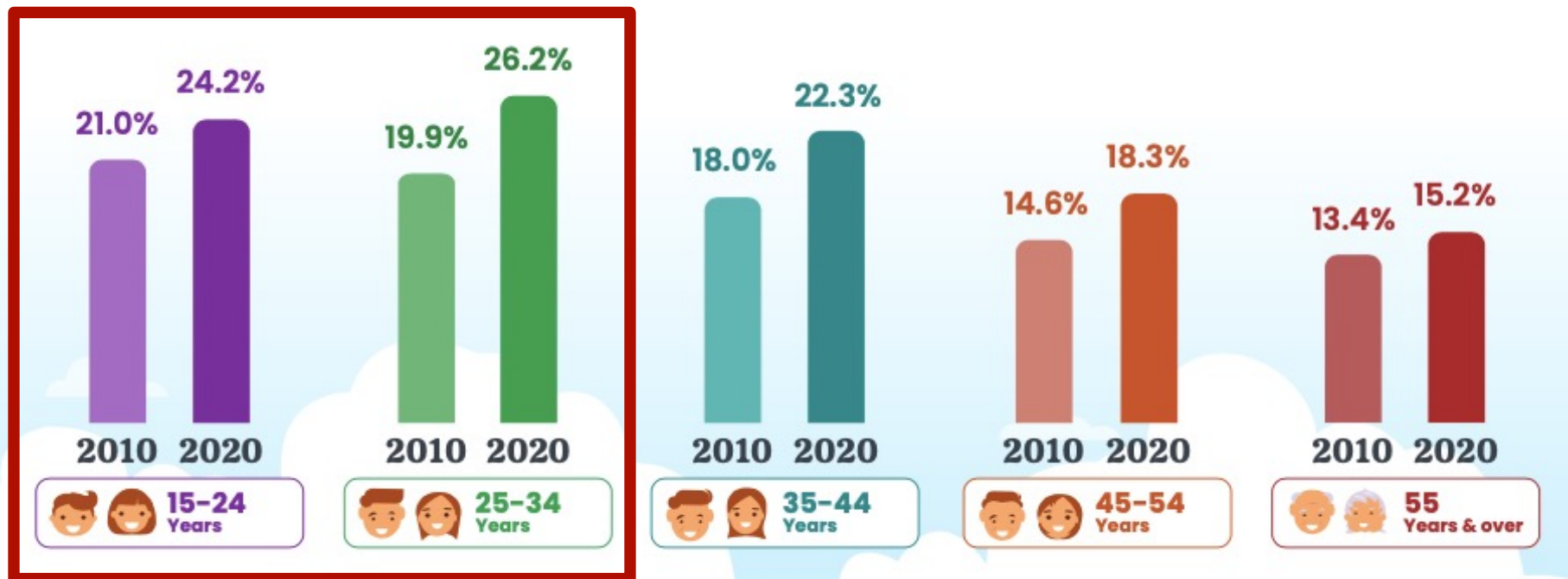
PROPORTION OF RESIDENTS WITH NO RELIGIOUS AFFILIATION BY AGE GROUP

Higher proportion of residents reported no religious affiliation across all age groups.

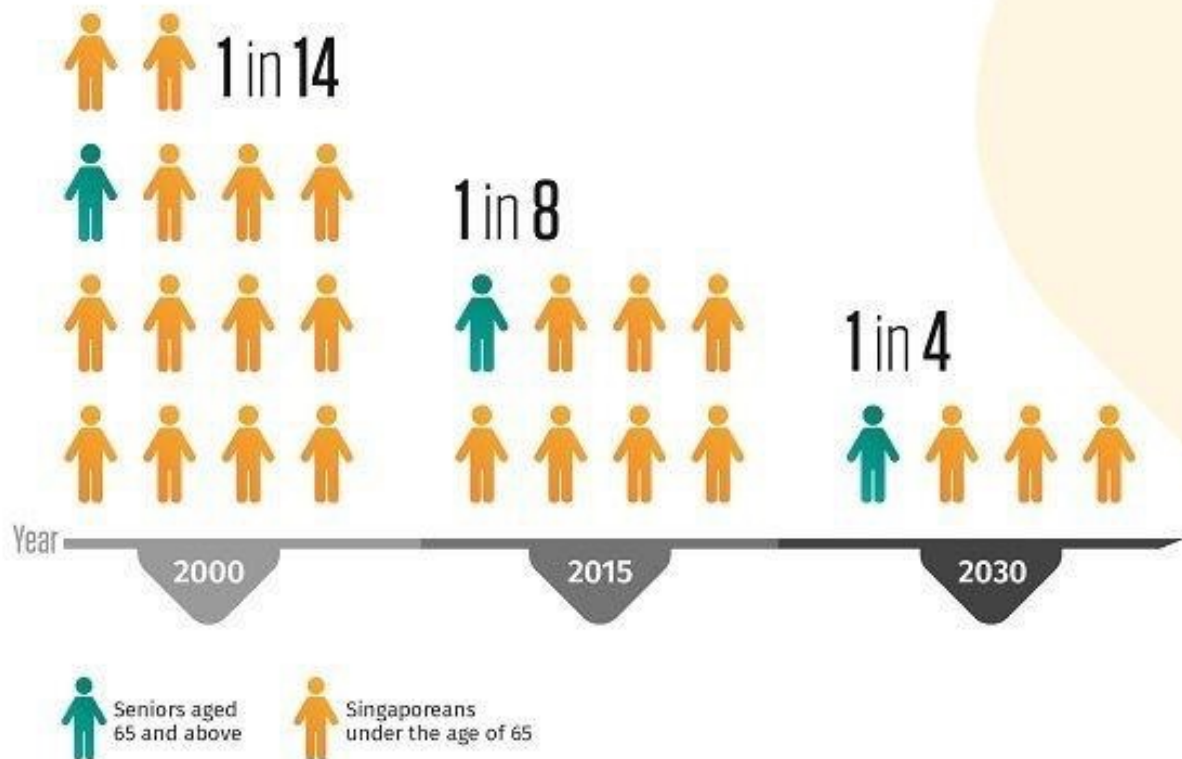


PROPORTION OF RESIDENTS WITH NO RELIGIOUS AFFILIATION BY AGE GROUP

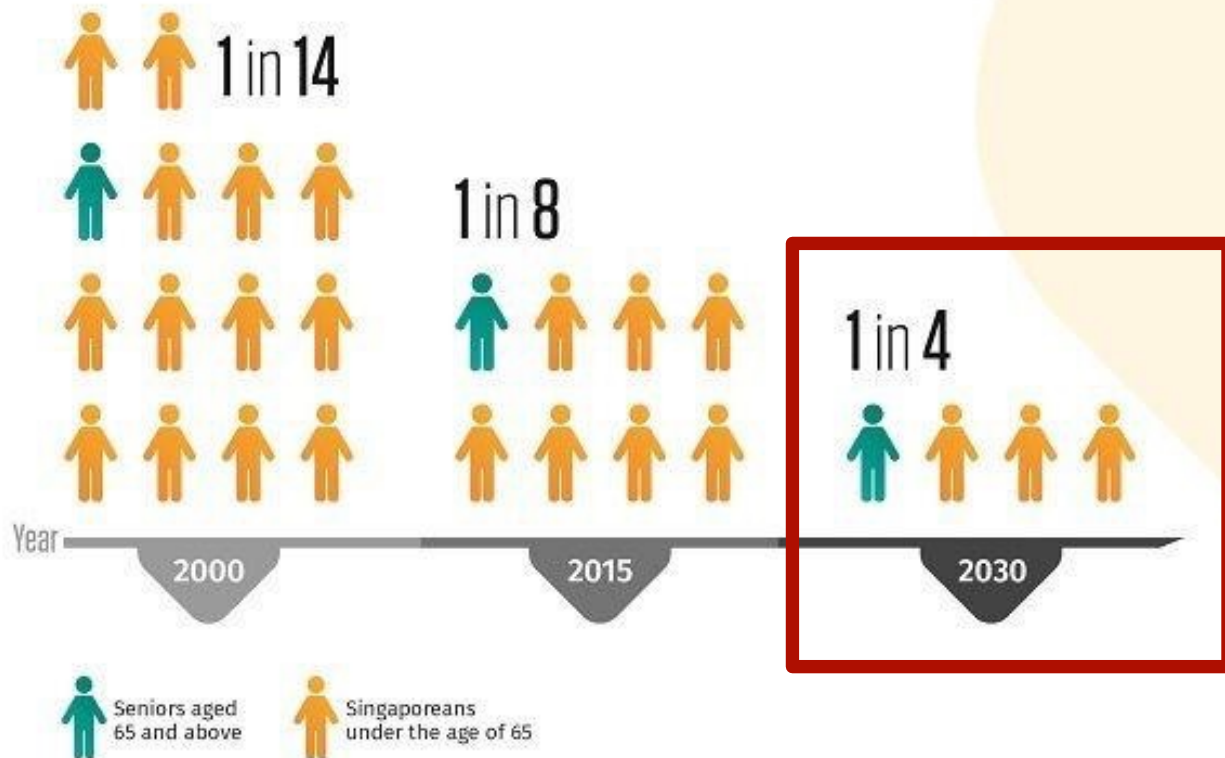
Higher proportion of residents reported no religious affiliation across all age groups.



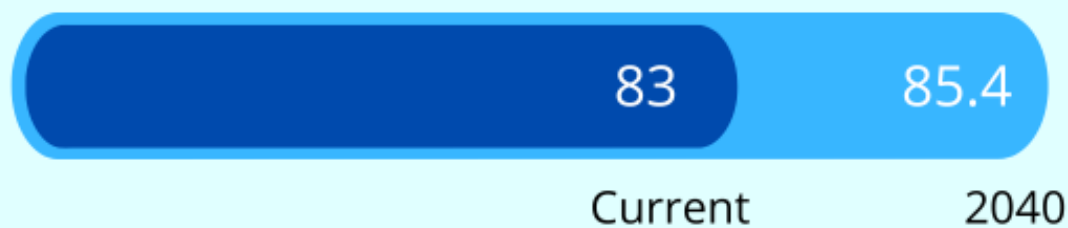
OUR POPULATION IS AGEING RAPIDLY



OUR POPULATION IS AGEING RAPIDLY



The current life expectancy in Singapore is 83 years and is expected to reach 85.4 years in 2040



OUR MOST PRODUCTIVE DECADES

- 50 to 60
- 60 to 70
- 70 to 80



Picture: Markus Spiske |
Unsplash

OUR MOST PRODUCTIVE DECADES

- ☑ 60 to 70
- ☑ 70 to 80
- ☑ 50 to 60

(Source: Paul Stevens, Ageing Matters)



Picture: Markus Spiske |
Unsplash

LUKE 1:16-17

“And he will turn many of the children of Israel to the Lord their God, and he will go before him in the spirit and power of Elijah, to turn the hearts of the fathers to the children, and the disobedient to the wisdom of the just, to make ready for the Lord a people prepared.”



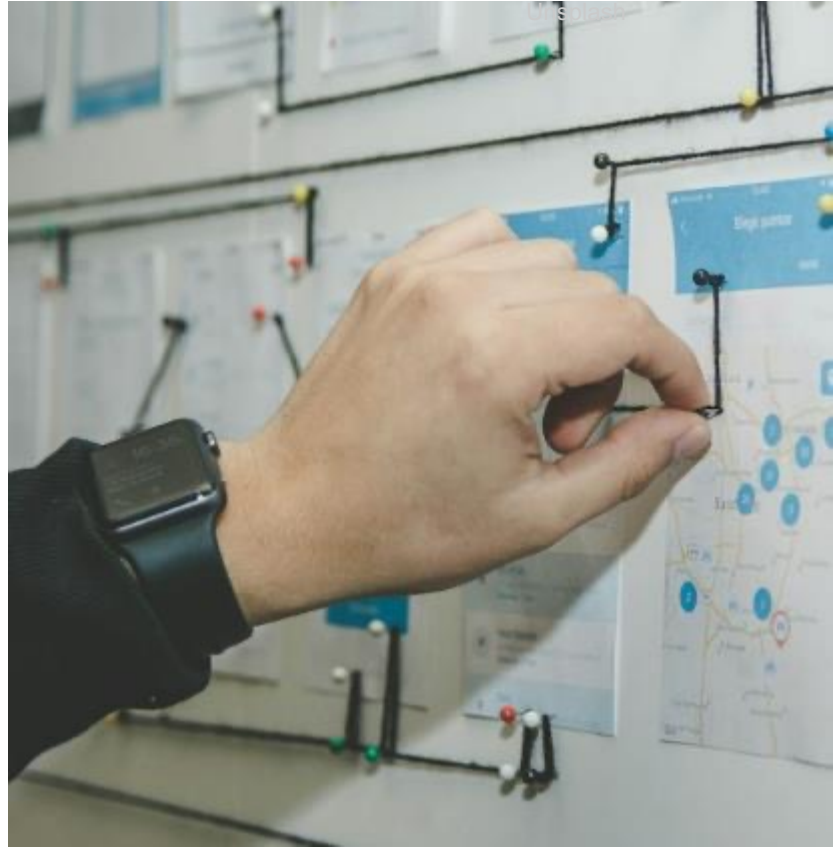
Picture: Markus Spiske |
Unsplash

Image: Nagy Arnold|
Unsplash



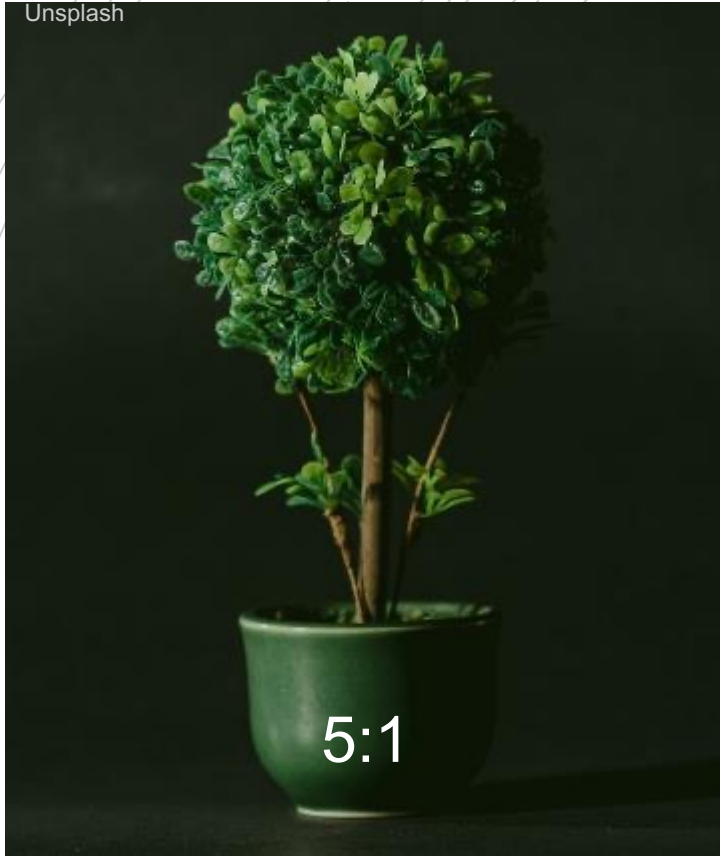
organic

Image: Alvaro Reyes|
Unsplash



organisational

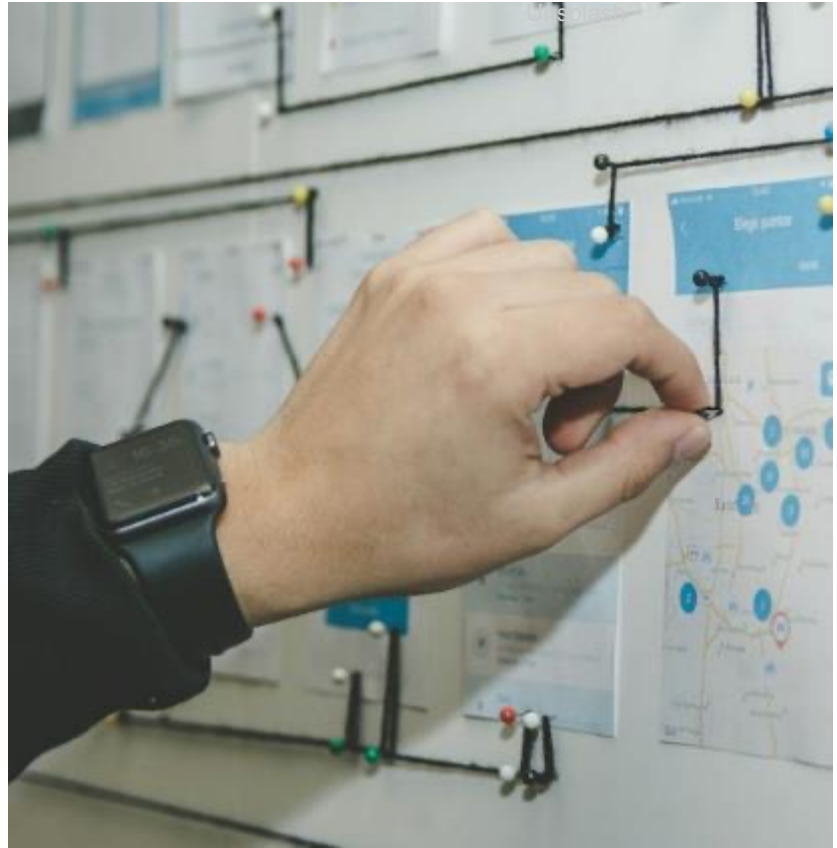
Image: Nagy Arnold|
Unsplash



5:1

organic

Image: Alvaro Reyes|
Unsplash



organisational

Image: Nagy Arnold|
Unsplash



organic

Image: Alvaro Reyes|
Unsplash



Districts adopting 13 yo CGs

organisational



ENCOURAGEMENT
Through leadership



EXPOSURE
Through interaction



EMPATHY
Through awareness



EMPOWERMENT
Through prayer & worship

BPJ CAMP 2024 - LIFE TOGETHER

	DAY 1 – Wed 12 Jun	DAY 2 – Thu 13 Jun	DAY 3 – Fri 14 Jun	DAY 4 – Sat 15 Jun
Morning	Departure to KL Sheraton	Breakfast	Breakfast	Breakfast & checkout
		Inter-Gen Worship Family/CG devotions	Inter-Gen Worship Family/CG devotions	Inter-Gen Worship Testimonies
		Plenary Group Time	Intergen forum Group Time	Closing Session
		Lunch	Lunch	Lunch
Afternoon	Arrival and Registration Check-in	Inter-Gen games Group discussion	Free time	Departure to SG
	Dinner			
Night	Welcome & Icebreaker Admin brief	Dinner	Dinner	
	Inter-Gen Worship SP Video	Generational Breakout Prayer Time	Extended Worship Prayer Time	
	Opening Session Group/Prayer Time			

BPG CAMP 2024 – LIFE TOGETHER

	DAY 1 – Wed 12 Jun	DAY 2 – Thu 13 Jun	DAY 3 – Fri 14 Jun	DAY 4 – Sat 15 Jun
Morning	Departure to KL Sheraton	Breakfast	Breakfast	Breakfast & checkout
		Inter-Gen Worship Family/CG devotions	Inter-Gen Worship Family/CG devotions	Inter-Gen Worship Testimonies
		Plenary Group Time	Intergen forum Group Time	Closing Session
		Lunch	Lunch	Lunch
Afternoon	Arrival and Registration Check-in	Inter-Gen games Group discussion	Free time	Departure to SG
	Dinner			
Night	Welcome & Icebreaker Admin brief	Dinner	Dinner	
	Inter-Gen Worship SP Video	Generational Breakout Prayer Time	Extended Worship Prayer Time	
	Opening Session Group/Prayer Time			

BPG CAMP 2024 – LIFE TOGETHER

	DAY 1 – Wed 12 Jun	DAY 2 – Thu 13 Jun	DAY 3 – Fri 14 Jun	DAY 4 – Sat 15 Jun
Morning	Departure to KL Sheraton	Breakfast	Breakfast	Breakfast & checkout
		Inter-Gen Worship Family/CG devotions	Inter-Gen Worship Family/CG devotions	Inter-Gen Worship Testimonies
		Plenary Group Time	Intergen forum Group Time	Closing Session
		Lunch	Lunch	Lunch
Afternoon	Arrival and Registration Check-in	Inter-Gen games Group discussion	Free time	Departure to SG
	Dinner			
Night	Welcome & Icebreaker Admin brief	Dinner	Dinner	
	Inter-Gen Worship SP Video	Generational Breakout Prayer Time	Extended Worship Prayer Time	
	Opening Session Group/Prayer Time			

BPJ CAMP 2024 – LIFE TOGETHER



Pre-School Speaker:

EDNA LOW

(Pastoral Staff, Sengkang
Methodist Church)

	DAY 1 – Wed 12 Jun	DAY 2 – Thu 13 Jun	DAY 3 – Fri 14 Jun	DAY 4 – Sat 15 Jun
Morning	Departure to KL Sheraton	Breakfast	Breakfast	Breakfast & checkout
		Inter-Gen Worship Family/CG devotions	Inter-Gen Worship Family/CG devotions	Inter-Gen Worship Testimonies
		Plenary Group Time	Intergen forum Group Time	Closing Session
		Lunch	Lunch	Lunch
Afternoon	Arrival and Registration Check-in	Inter-Gen games Group discussion	Free time	Departure to SG
	Dinner			
Night	Welcome & Icebreaker Admin brief	Dinner	Dinner	
	Inter-Gen Worship SP Video	Generational Breakout Prayer Time	Extended Worship Prayer Time	
	Opening Session Group/Prayer			

BPG CAMP 2024 – LIFE TOGETHER

LUKE 1:16-17

“And he will turn many of the children of Israel to the Lord their God, and he will go before him in the spirit and power of Elijah, to turn the hearts of the fathers to the children, and the disobedient to the wisdom of the just, to make ready for the Lord a people prepared.”



Picture: Markus Spiske |
Unsplash

Father God, You are the God of Abraham, Isaac, Jacob and Joseph. The God Who is the same, yesterday and forever. The God Who was, Who is, and is to come.

God of generations, come and move amongst us in this camp. Turn the hearts of every generation and every person towards You.



That we may serve Your purposes in our generation. That future generations may praise You. And one generation shall commend Your works to another and proclaim Your mighty acts. Until our nation and the nations turn Godward and know there is no God like You.

In Jesus' name we pray, Amen!





Camp Location and Date



12 to 15 June 2024 (Wed to Sat)

Please make sure to go to the correct hotel

**Sheraton Imperial
Kuala Lumpur Hotel**

- ✗** Four Points by Sheraton Kuala Lumpur
- ✗** Sheraton Petaling Jaya Hotel



Getting there: Transport (self-arranged)

Hotel Address:

*Sheraton Imperial Jalan Sultan Ismail, Chow Kit, 50250 Kuala Lumpur,
Wilayah Persekutuan Kuala Lumpur, Malaysia*

Scroll down to [Getting Here](#) on Hotel website for more information

Car Parking Fees: Hotel parking @ **RM 5** per entry
Valet parking @ **RM 30** per entry

Payment Mode: Touch and Go card or
Credit/ Debit card



Getting there: Transport (Bus)

Singapore to KL

- Pick up @ **Senja-Cashew Community Club**
101 Bukit Panjang Road 679910
- 12 June (Wednesday) at 7:30 am

KL to Singapore

- Pick up @ Sheraton Imperial Hotel drop-off area
- 15 Jun (Saturday) at 1:00 pm

Campers taking the bus will be added to a **Whatsapp Group** with their Bus ICs (will be created shortly)

- For any queries in the lead-up to camp, please contact: Michael @ 9621 3205





At the Hotel (Day 1)

1. **Registration** starts from 2:00 pm at the **Nusantara Ballroom @ Level 2**
2. Campers may drop off your bags in the ballroom
3. **Room Key Collection** will be from 5:00 pm onwards
4. Only appointed **Room I/C** to collect the card key
5. **Rooming Requests** are noted and will be granted based on availability
6. **Dinner** will start earlier at **5:30 pm** on Day 1
7. **Plenary Session 1** will start at **7:00 pm**
8. Water at the hotel is **non-potable** (not safe for drinking)



Programme Overview

	12 Jun 24 (Wed)	13 Jun 24 (Thur)	14 Jun 24 (Fri)	15 Jun 24 (Sat)
0700		Breakfast	Breakfast	Breakfast
0800				
0900		Worship & Devotions	Worship & Devotions	Worship & Testimonies
1000		#2 Plenary	#4 Inter-Gen Forum	#5 Closing
1100				
1200		Lunch	Free and Easy	
1300				
1400		Registration		
1500		Inter-Gen Games		
1600			Keys Collection	
1700	Dinner	Dinner	Dinner	
1800				
1900	Welcome Brief & Worship	#3 Generational Breakout	Inter-Gen Worship Night	
2000	#1 Opening			
2100				



Dining

	12 Jun 24 (Wed)	13 Jun 24 (Thur)	14 Jun 24 (Fri)	15 Jun 24 (Sat)
0700		Breakfast	Breakfast	Breakfast
0800				
0900		Worship & Devotions	Worship & Devotions	Worship & Testimonies
1000		#2 Plenary	#4 Inter-Gen Forum	#5 Closing
1100				
1200		Lunch	Lunch (Free and Easy)	
1300				
1400	Registration			
1500		Inter-Gen Games	Free and Easy	
1600	Keys Collection			
1700				
1800	Dinner	Dinner	Dinner	
1900	Welcome Brief & Worship			
2000	#1 Opening	#3 Generational Breakout	Inter-Gen Worship Night	
2100				

Breakfast and Dinner will be provided. Lunch is included on Day 2 and self-funded on Day 3.

* Breakfast is not included for Conference Package



Dining Arrangements

District-based Seating Arrangements

- BPJ Lights & Hills (Ps Kirk) @ Celestial Court @ Level 3
- WestFields (Ps Keng Yeow) @ Celestial Court @ Level 3
- GENesis (Ps Da-Win) @ Penang I & II @ Level 3
- Westside Life & Legacy (Ps Portia) @ Essence @ Level 1
- **Breakfast** is served only at **Essence** only from 6:30 am



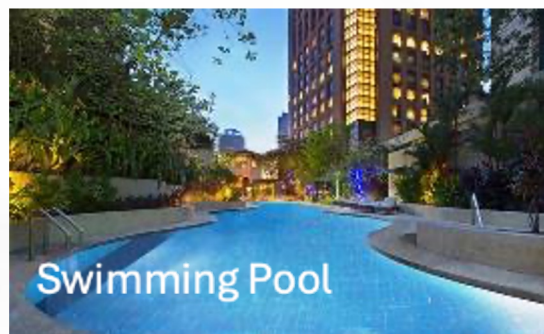
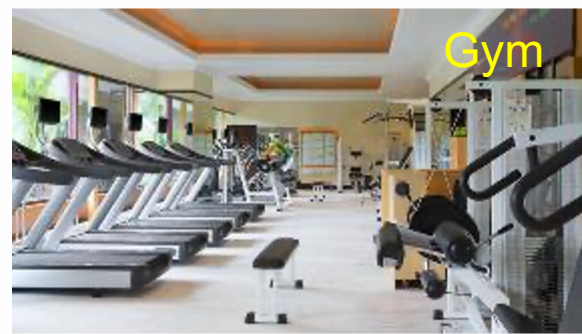
Parents to note :)

- **All** camp participants (inclusive of Pre-School and Primary) will join in for **Inter-Gen Worship** sessions and **Devotion** as well as **Inter-Gen Games**.
- **Youth** (13 and above) will be joining the Main programme in Nusantara Ballroom for all sessions.
- **Primary** (LPUP) will be joining the Main programme for **sessions 1 and 5**. All other sessions will be conducted separately at **Do@M** room at Level M
- **Pre-School** (separate) programme will be held at **Be@M** room at Level M

*All **parents** would be **rostered** to serve at least one session of the Pre-School/ Primary School programmes! (Note: You will be notified of your session closer to the date)



At the Hotel





Medical Matters

- All campers are **strongly encouraged** to purchase travel insurance
- Do **bring your own medications** and to **self-medicate** for minor illnesses.
- Nearest Medical Facilities:
 - Klinik Mediviron @ Quill City Mall (Across the road)
 - KPJ Sentosa Specialist Hospital (5 km away from Hotel)
- In case of medical **emergencies**:
 - Please contact: Kevin Long, *contact number to be provided during admin brief on Day 1*





Other Keys Points

1. There will be **no physical copy** of the camp booklet. The e-booklet will be available to download on Bukit Panjang Centre microsite one week before camp. You may **print a copy** for your own reference
2. There will be **WIFI** coverage within the Hotel premises
3. **Light Refreshment** (Biscuits, Tea and Coffee) will be provided during the sessions. Optional to bring a mug or thermos flask to make a hot drink.
4. Other things to bring:
 - a. **Jacket/ Cardigan** during the Sessions
 - b. A **pen** for Inter-Gen Games on Day 2



Q&A

Ask your questions at
pigeonhole.at

Enter passcode

BPJCAMP

Join session
BPJ PRE-CAMP BRIEF





Q&A

**For any further questions, please write to
campcovenant.bpj@cefc.org.sg**





See Everyone on 12 Jun!

